

A large, solid teal circle is located on the left side of the image, partially overlapping the text and the background landscape.

**Go *your own way***  
GIM Suite *Learning*



# Take full control of *your data*

## Your journey, your way

Our learning pathways are designed to help you progress in your career, depending on the level of expertise required in your role.

All participants learn the basic skills and knowledge to use the GIM Suite for everyday data management.




Once you've mastered the basic concepts with our starter course, you can progress your skills further in our higher-level courses designed for managing more complex scenarios.

Each GIM Suite Learning course builds on outcomes from the previous course and forms a pathway tailored to your career and aspirations. Each unit in every course includes assessments, leading to either unit certifications or accreditations recognised worldwide.



## Learning, your style

To complement your busy schedule and individual learning styles, we offer structured courses with a mix of learning platforms and delivery techniques, including:

-  Face-to-face classes
-  Online learning
-  Virtual classrooms





## Face us face-to-face

Learn in a traditional classroom setting with experienced instructors, plus benefit from being in the same room and sharing experiences with other GIM specialists. We offer face-to-face classes around the world at most of our office locations.



## Follow the online study path

Learn at your own pace with easily accessible online learning resources, which guide you step by step through our GIM Suite software.



## Join our virtual classrooms

Improve your GIM Suite skills without leaving your desk. If you have a limited travel budget, would rather not be away from the office or are working in a remote location, our virtual classrooms are for you.

You'll gain the same valuable skills as you would if you attended the course in one of our face-to-face classes.

## Stretch your mind, not your schedule

You can choose a learning program that suits your budget and work schedule. Most of our courses allow you to learn by attending virtual classrooms or enrolling in an online unit.

## Tailor-made teaching

Our courses are designed to fit your needs by focusing on the aspects of our products applicable to your workflows and chosen career path.

## Worldwide recognition

We offer a program that includes accredited and non-accredited learning options.







# Reach your goals *learn more*

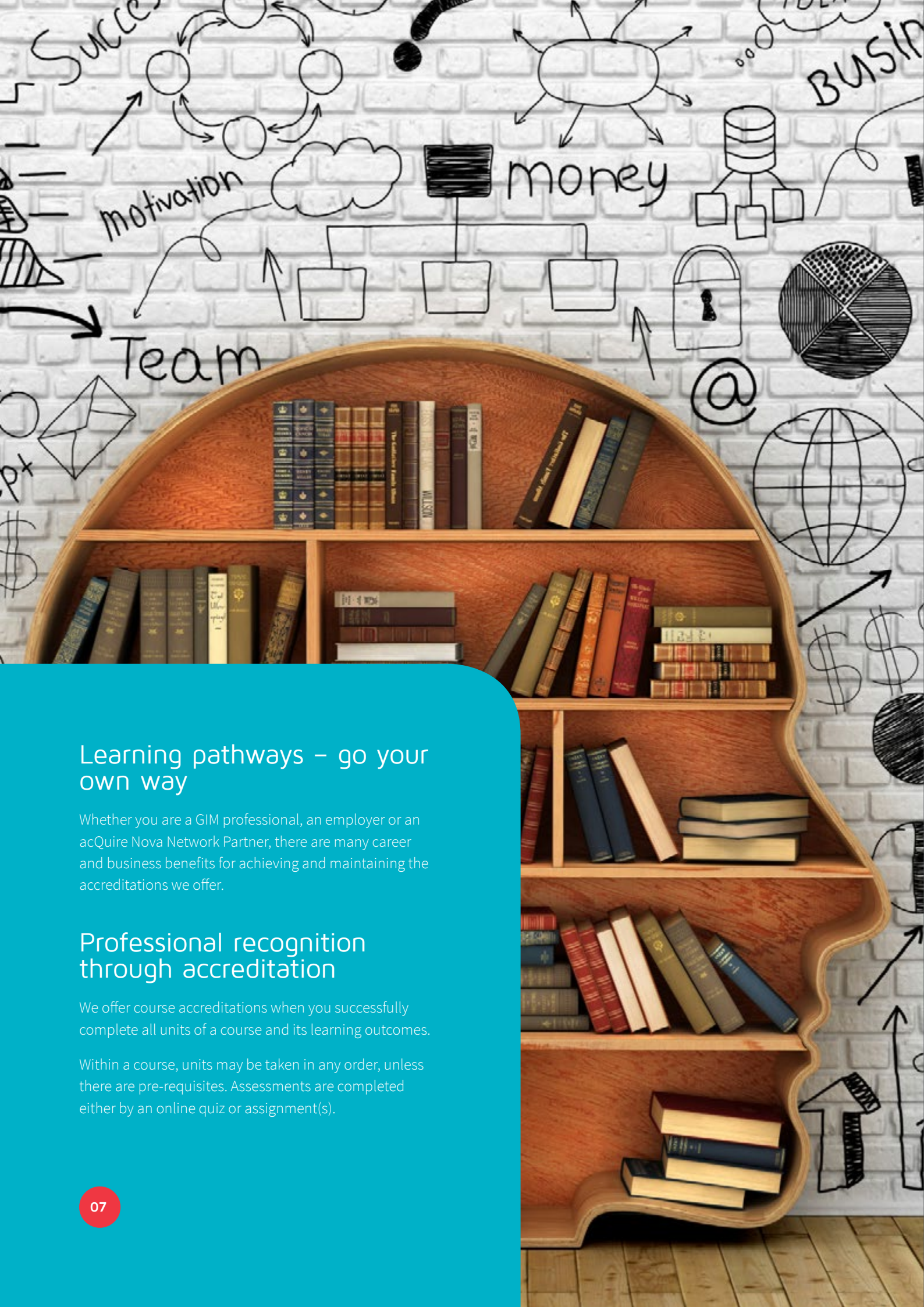
## Credit for prior learning

Your prior experience and knowledge of acQuire products is accepted through our Recognition of Prior Learning (RPL) process.

## On-the-go, ongoing learning

Our mix of learning platforms and delivery techniques gives you the opportunity to learn at your own pace and at a time convenient to you. We are continuing to develop more online courses, complementing our blended learning approach.





# Smart ways to *get ahead*

## Keep the status

### Update your skills

After you’ve put in all your hard work to achieve accreditation, maintain your status by taking part in any GIM Suite Learning activity within two years of receiving your accreditation. Enrol in a next-level learning course or master a new skill in one of our units designed for Continued Professional Development (CPD).

### Join the GIM movement

Alternatively, you can renew your accreditation by attending one of our global GIM Jam events. GIM Jam Mastermind is a platform for our global mining and exploration community to share ideas, learn about GIM technology and meet with GIM experts. Simply look out for the next event near you through our events and bookings webpage.

### Post-nominal letters

Post-nominal letters indicate your current accreditation level upon successful completion of a GIM Suite Learning course. You are accredited as an individual course participant, not as a corporation, firm or third party. The letters after your name identify you as a professional with a high level of product knowledge and proficiency in your industry.

Course name	Post nominal letters
GIM Suite Starter	Not accredited
GIM Suite Practitioner	your name, AP
GIM Suite Practitioner - Coal	your name, AP C
GIM Suite Professional	your name, ACP
GIM Suite Professional - Coal	your name, ACP C



## Learning pathways – go your own way

Whether you are a GIM professional, an employer or an acQuire Nova Network Partner, there are many career and business benefits for achieving and maintaining the accreditations we offer.

## Professional recognition through accreditation

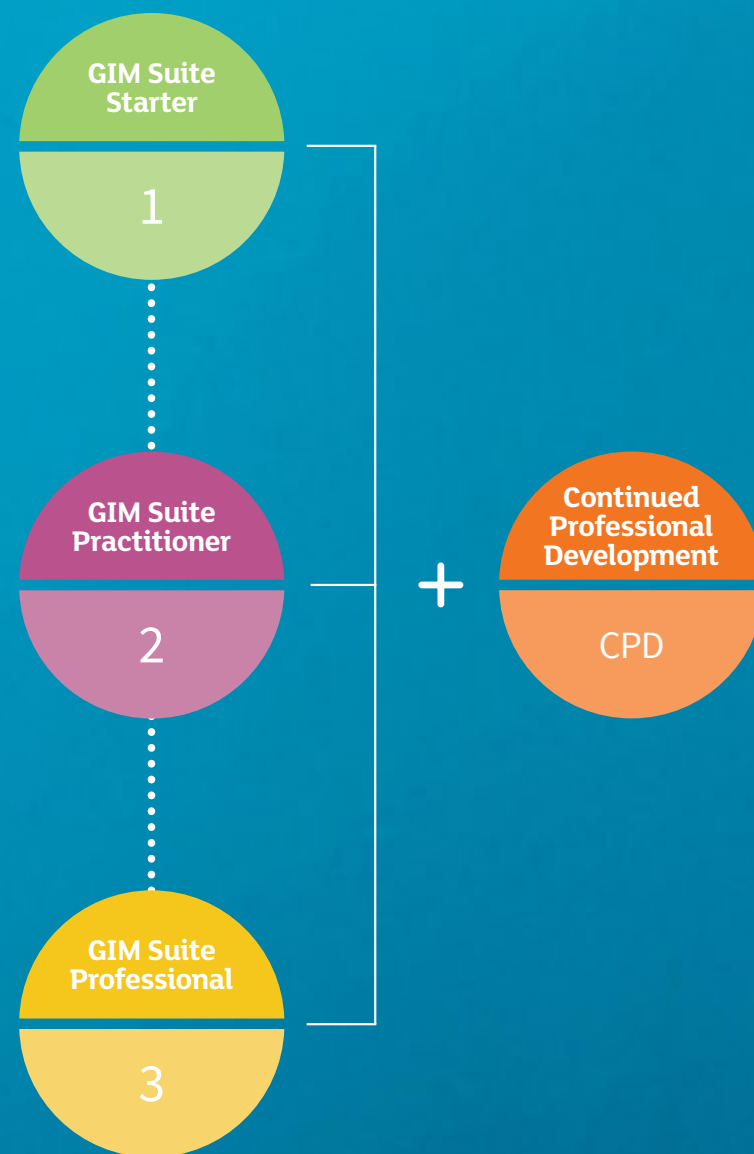
We offer course accreditations when you successfully complete all units of a course and its learning outcomes.

Within a course, units may be taken in any order, unless there are pre-requisites. Assessments are completed either by an online quiz or assignment(s).



# Learning pathways

## - *courses*



### GIM Suite Starter (1000)

With a focus on learning to speak the GIM Suite language, GIM Suite Starter provides the ultimate beginner's guide for users new to GIM Suite and relational databases.

**Method:** Face-to-face classes | Online  
| Virtual Classroom



### GIM Suite Practitioner (2000)

Designed to give database managers control of their GIM Solution. You'll learn all the skills you need to configure your workspaces to meet your changing business environment.

**Pre-requisite:** GIM Suite Starter (1000)

**Method:** Face-to-face classes  
| Virtual Classroom



### GIM Suite Professional (3000)

Designed to put GIM Suite administrators in control of growing and extending their GIM Solution into new business spaces. You'll achieve the highest level of proficiency and knowledge to work with geoscientific data across multiple sites and more complex GIM solutions.

**Pre-requisite:** GIM Suite Practitioner (2000)

**Method:** Face-to-face classes



### Continued Professional Development (CPD)

Stay up to date and master the latest GIM concepts. Whether it's implementing an additional module, or learning what's new in our latest software version, you can continue to grow your knowledge and maintain your learning accreditation by participating in one of our professional development units.

## Ready to go your own way?

Head to **[acquire.com.au/gim-suite-learning](https://acquire.com.au/gim-suite-learning)** for a detailed overview of all of our current GIM Suite Learning courses. View all of our upcoming courses and register online today.

### Contact

For more details on our learning courses, please visit our website at [acquire.com.au/learning](https://acquire.com.au/learning)

or email [learning@acquire.com.au](mailto:learning@acquire.com.au)

Telephone +61 8 9316 6600

Website [www.acquire.com.au](https://www.acquire.com.au)

Street address 26 Kintail Road, Applecross, Western Australia 6153

Postal address PO Box 933, Canning Bridge, Western Australia 6153

AUSTRALIA | CANADA | CHILE | SOUTH AFRICA